

16 X 24 ISO Portframe Installation Instructions

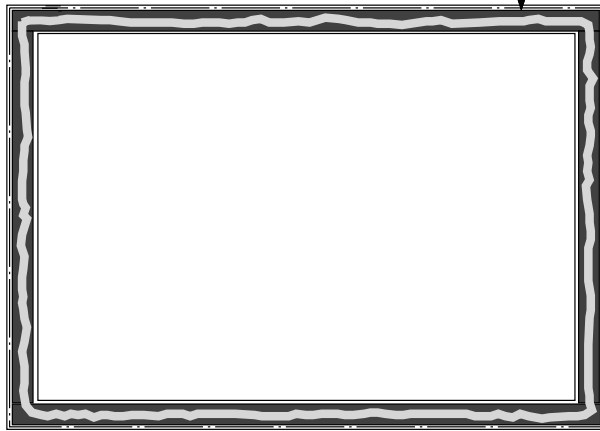
Please review instructions before installing this product

Step 1: Make sure all mounting surfaces are clean and free of Dust.

Step 2: Apply a bead of sealant to the mounting flange gasket on the Auditorium Frame Half. **THIS ADDS ADDITIONAL INTEGRITY TO THE SEAL (SEE DETAIL #1)**

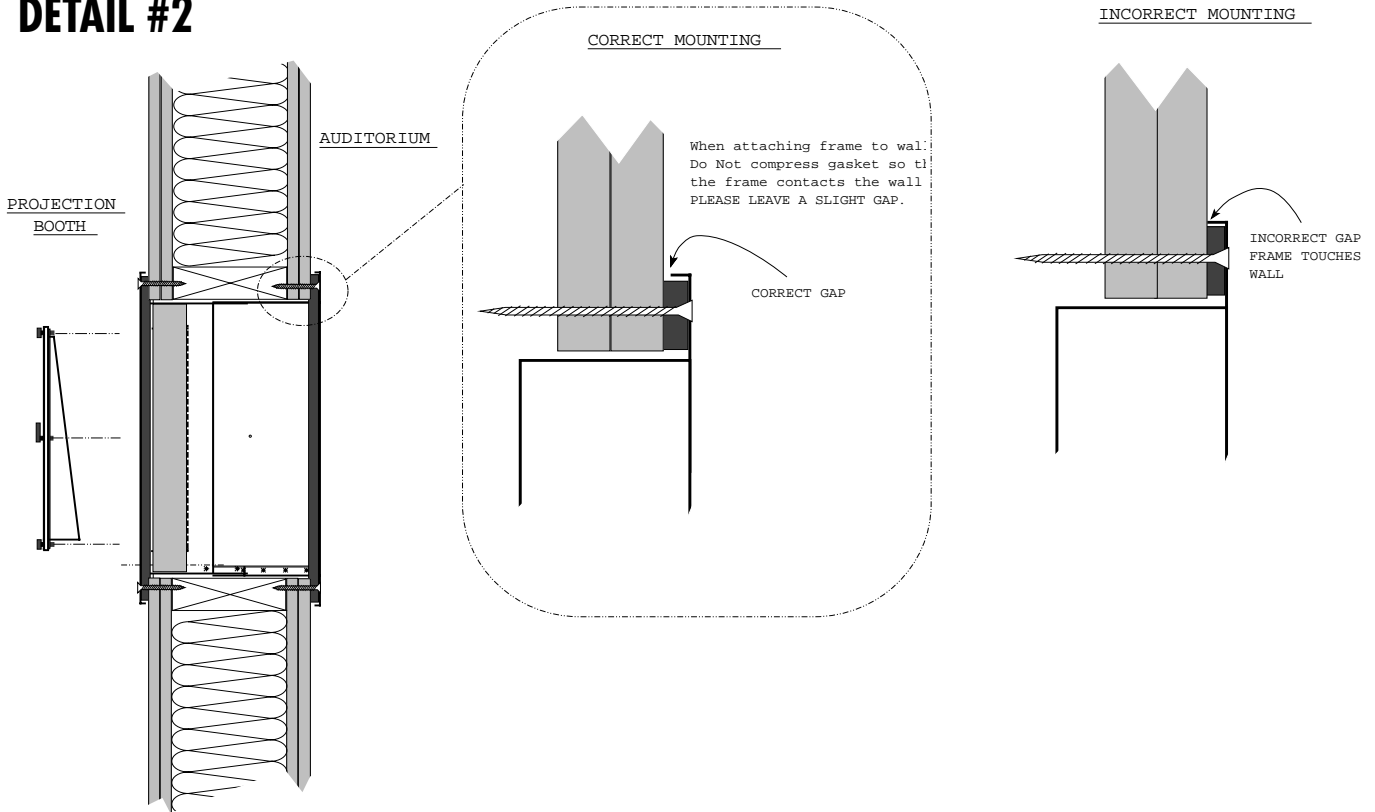
DETAIL #1

APPLY A BEAD OF SILICONE SEALANT TO THE FACE OF FRAME SEALING GASKET



Step 3: Mount the Auditorium Frame Half. (SEE DETAIL #2)

DETAIL #2



Step 4: Apply a bead of Silicone Based Caulks to the mounting flange gasket on the Projection Room Frame Half. THIS ADDS ADDITIONAL INTEGRITY TO THE SEAL

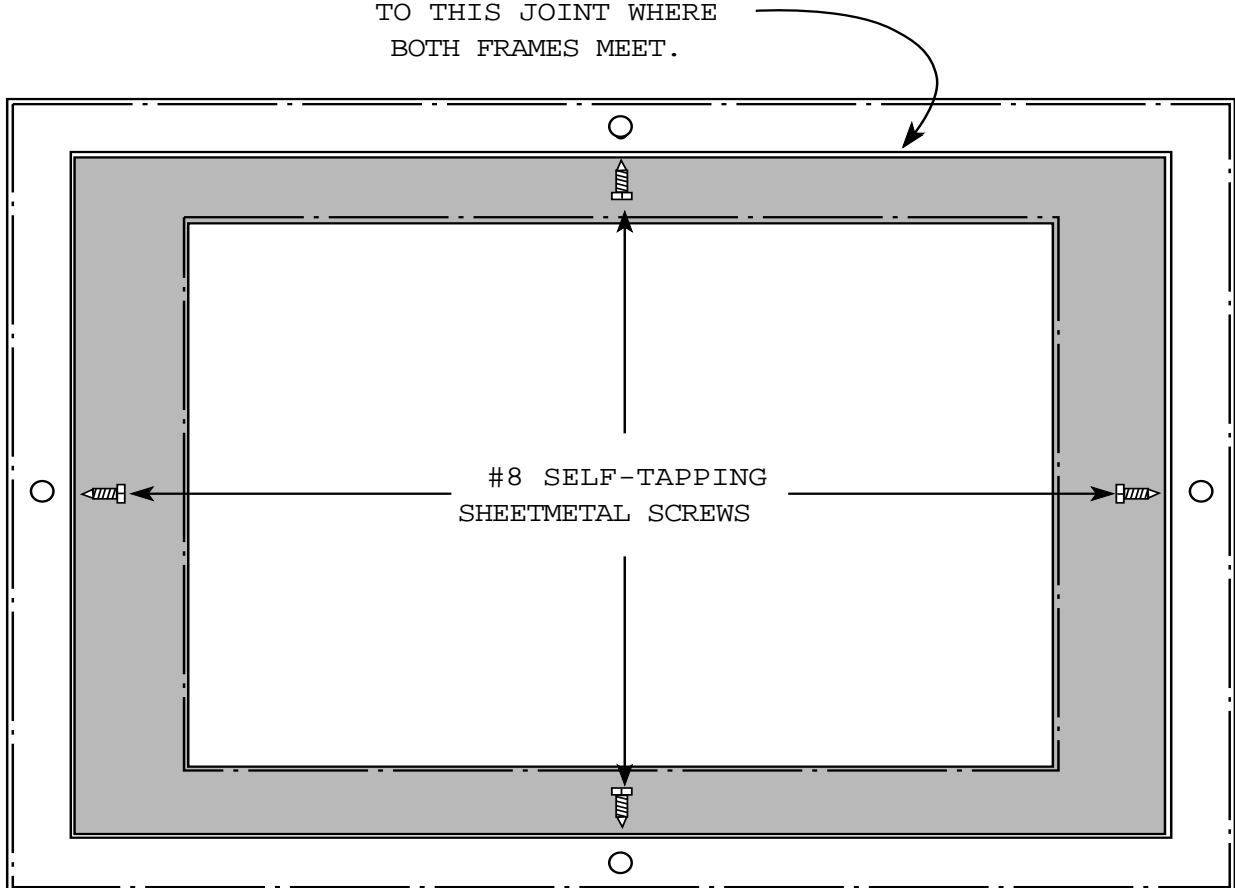
Step 5: Mount the Projection Room Frame Half. (SEE DETAIL #2)

Step 6: After both frames have been secured to the wall, take (4) #8 Self-tapping screws and use them to fasten the Two frames halves together. (SEE DETAIL #3)

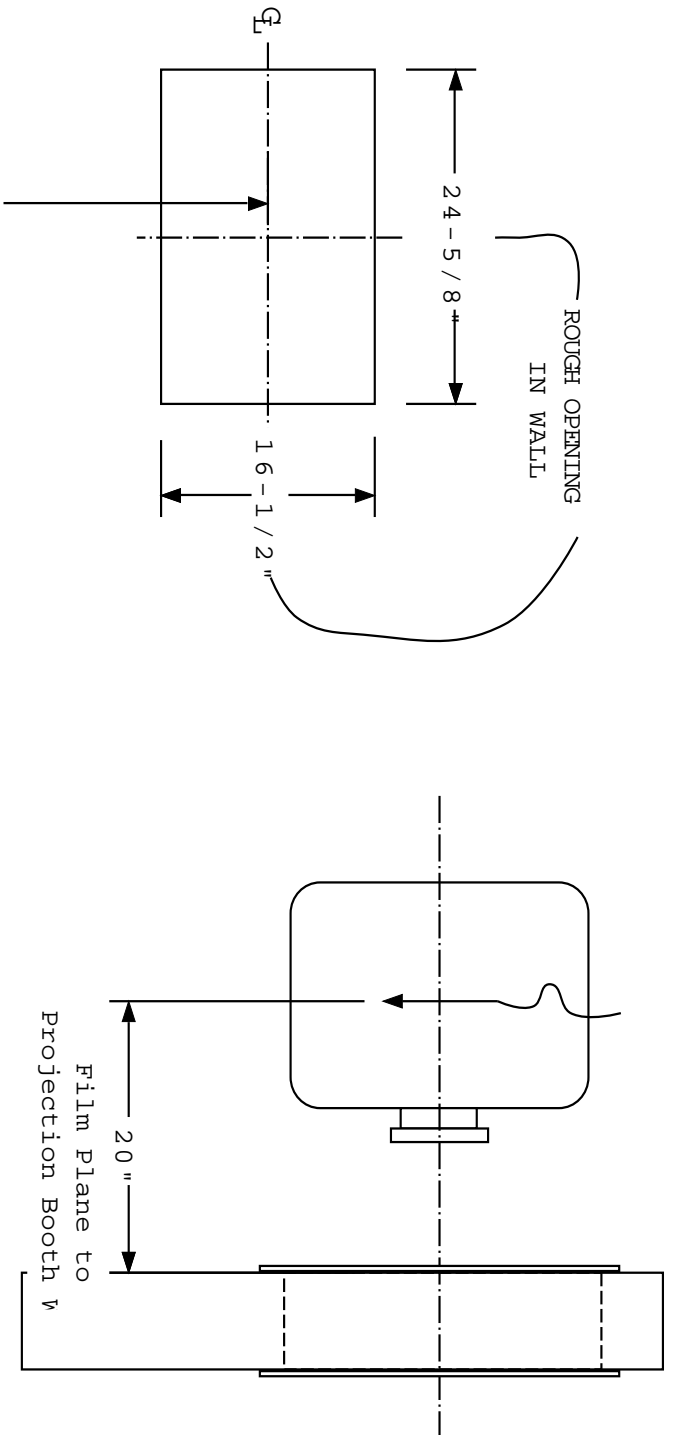
Step 7: After both frames have been secured to per step 5. Seal the Mating Joint of the Two Frame Halves with a Silicone Based Caulk. THIS ADDS ADDITIONAL INTEGRITY TO THE SEAL. (SEE DETAIL #3)

DETAIL #3

APPLY SILICONE SEALANT
TO THIS JOINT WHERE
BOTH FRAMES MEET.



AS VIEWED FROM AUDITORIUM



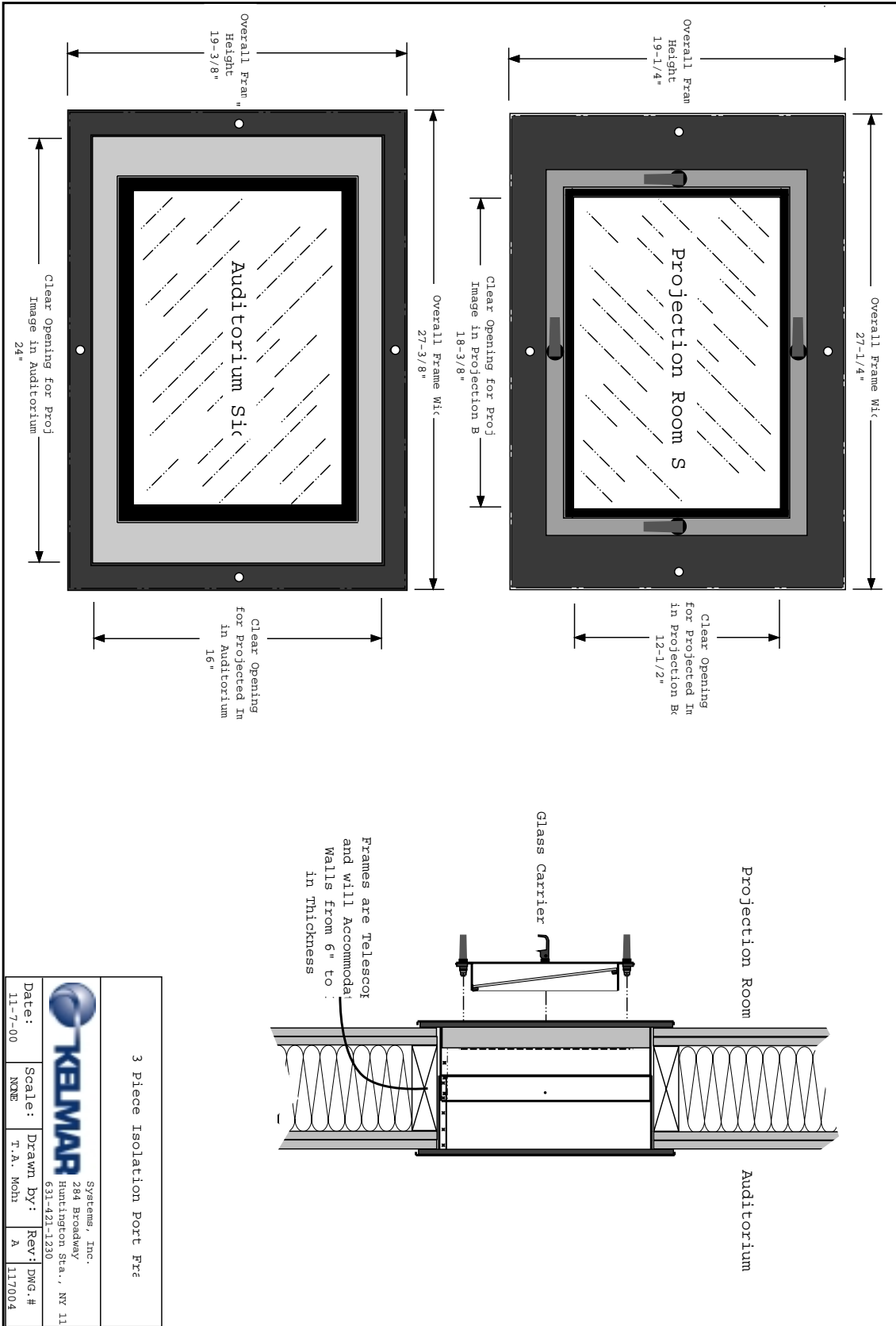
See Note "A"

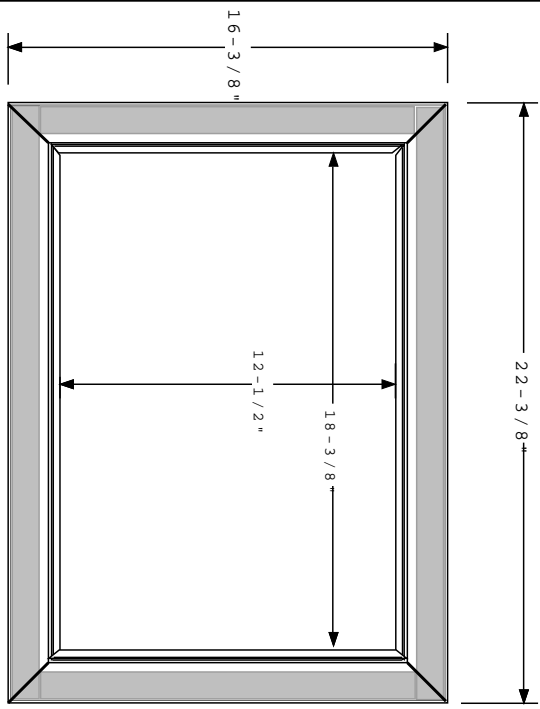
Notes:

A: 48" for "0" Degree Projection Angle, Reduce by 1/2" degree of pitch. ie: 3 degrees of downward pitch sha a Projection Port Centerline height of 46-1/2" A.F.I

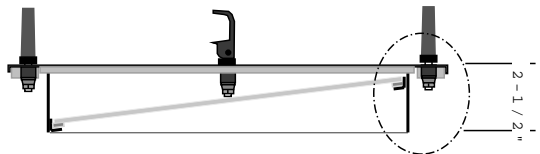
FINISHED BOOTH FLOOR

Porthole Frame Roughing Detail

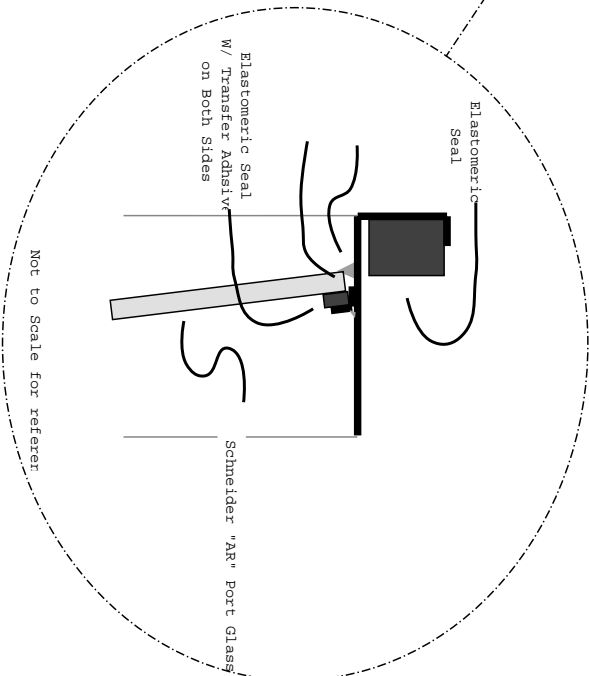




Glass Carrier
FRONT VIEW

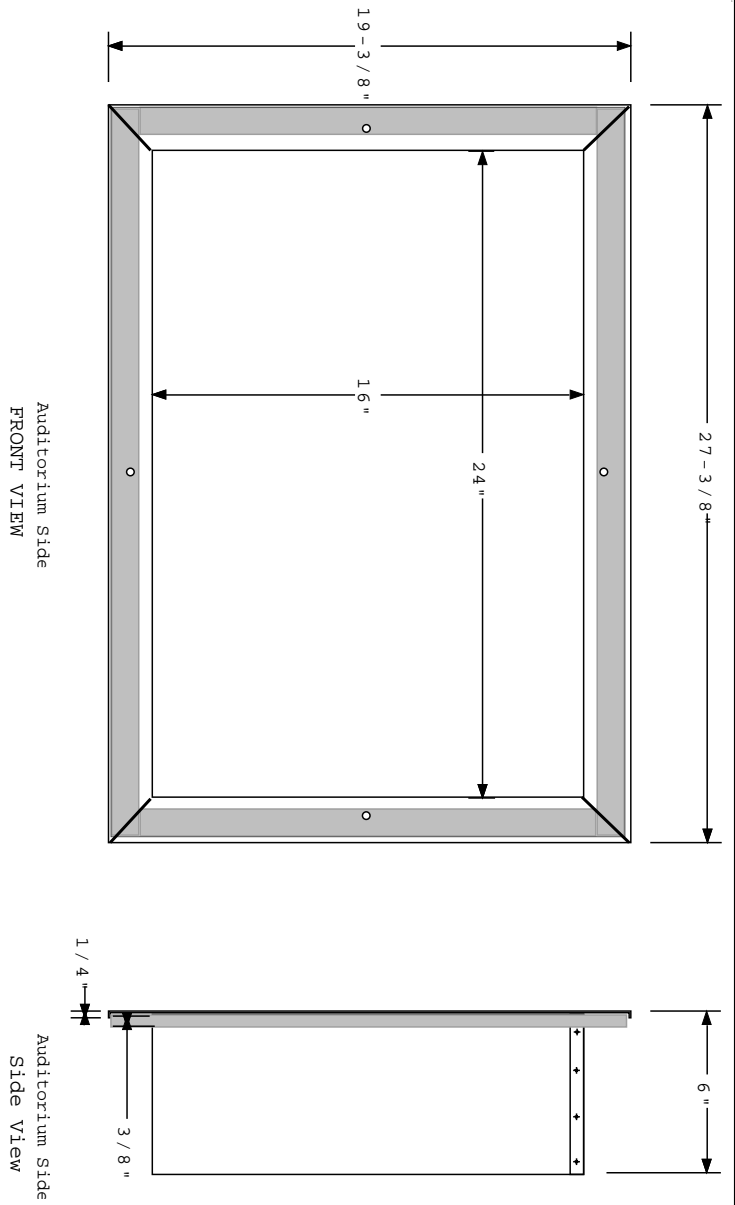



Glass Carrier
Side View




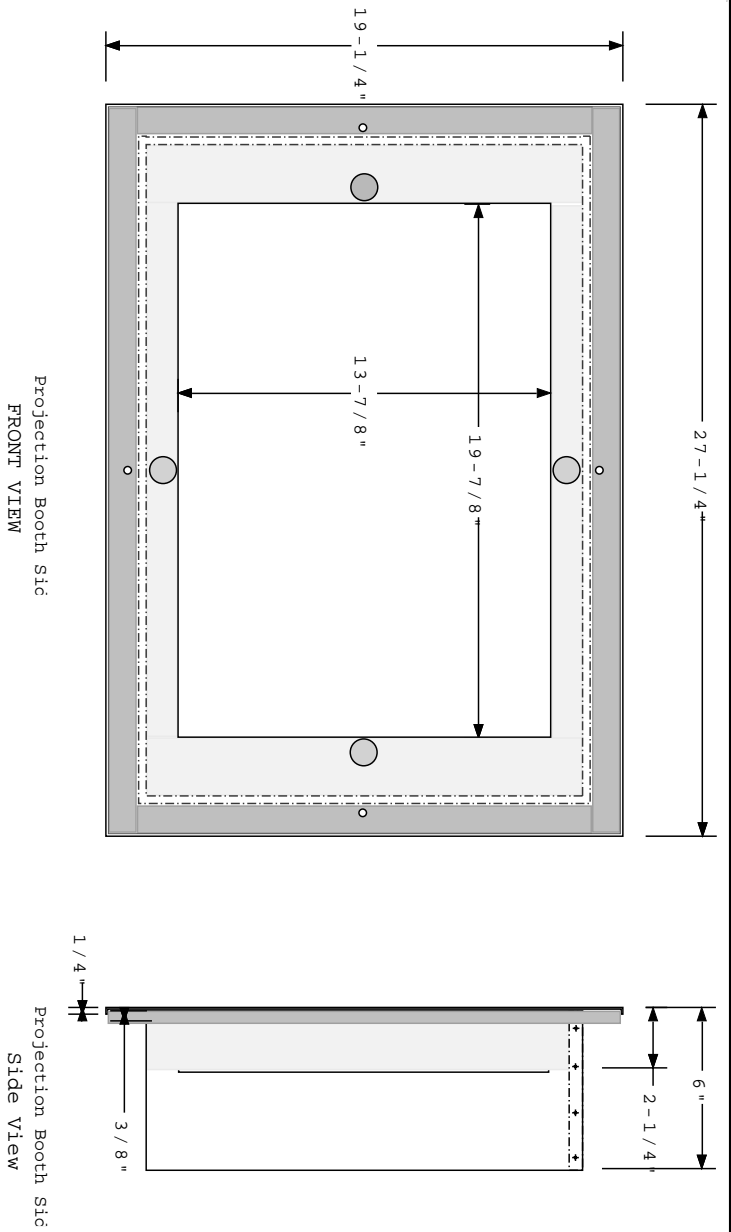
Legend:
 = Poron Elastomeric Seal

Auditorium Portion of 3 Piece Isolation Port Frame			
Systems, Inc. 284 Broadway Huntington Sta., NY 11			
Date:	Scale:	Drawn By:	Rev:
11-7-00	3"=1'	T. A. Mohr	A
			117003



Legend:
 = Poron Elastomeric Se

 Auditorium Portion of 3 Piece Isolation Port Frm			
Systems, Inc. 284 Broadway Huntington Sta., NY 11			
Date:	Scale:	Drawn By:	Rev:
11-7-00	3"=1'	T. A. Mohr	A
			DWG.#
			117002



- Legend:
- = Poron Elastomeric Seal
 - = Acoustic Foam for Sound Dampen

Projection Booth Portion 3 Piece Isolation Port Frc			
Systems, Inc. 284 Breakway Huntington Sea., NY 11			
Date:	Scale:	Drawn By:	Rev: DWG.#
11-7-00	3"-1"	T.A. Mohn	A 117001