

# Barco service bulletin

---

**Serial Number:** 975  
**Date:** 05/05/2011  
**Product:** DP90, DP100 and DP-3000  
**Priority code\*:** C

- A. "Must" modification, Barco will provide the necessary components to perform this modification at no charge.
- B. Improves the reliability of the product.
- C. Improves the general working conditions of the product.
- D. For information only.

## 1. HALF SPLIT SCREEN PROBLEMS ON DP90, DP100 AND DP-3000 DIGITAL CINEMA PROJECTORS

### 1.1 General

---

#### Phenomenon

Some DP90, DP100 and DP-3000 digital cinema projectors show ½ split screen problems.

#### Cause

The cause of the half-screen is specific to RDRAMs locking on the EFIB/modular systems. For an unknown reason one of the two RDRAMs of the DMD channel becomes inactive which results in a ½ split screen.

#### Solution

TI has released the TI software package **V15.1** which includes the feature for ½ Screen Monitoring/Detection with auto recovery. This software package does not prevent the phenomenon but has the ability to detect and recover from a half-screen situation. To activate this feature a system variable has to be set. To simplify the activation procedure Barco has made a "system.env" file which can be downloaded from the secured Barco web site. To install and activate the feature see included procedure "Enabling ½ screen monitoring", page 2.

The TI software package **V15.1** and the additional SYSTEM.ENV file can be downloaded from the secured Barco web site <https://my.barco.com>

- Reference TI software package V15.1 : **DPxx TI software release (R32978306)**.
- Reference additional SYSTEM.ENV file : **Half Image Patch for the TI software package v15.1.52 (R33050700)**.

#### Scope

All DP90, DP100 and DP-3000 digital cinema projectors which show the ½ split screen phenomenon.

## 1.2 Enabling 1/2 screen monitoring



**CAUTION:** To enable the 1/2 screen monitoring you need the file "system.env" which is included in the Half Image Patch for the TI software package v15.1.52 (R33050700). This file may only be used for DP90, DP100 and DP-3000 cinema projectors. Using the environment variable (system.env) on an FFIB / Satellite formatter systems will cause excessive logging and eventually damage to the board.

### Necessary tools

TI control application.

### How to activate the 1/2 Screen Monitoring/Detection with auto recovery feature?

1. Ensure that the TI software package V15.1 is installed. If not, install as per normal installation instructions using the TI control application.
2. Install the **system.env** file, which is include in the **Half Image Patch for the TI software package v15.1.52** (R33050700), in the "File-Sys" > "Root Access" using the DLP Control Program > "Put file". If a previous system.env file is already in the root directory simply delete it.

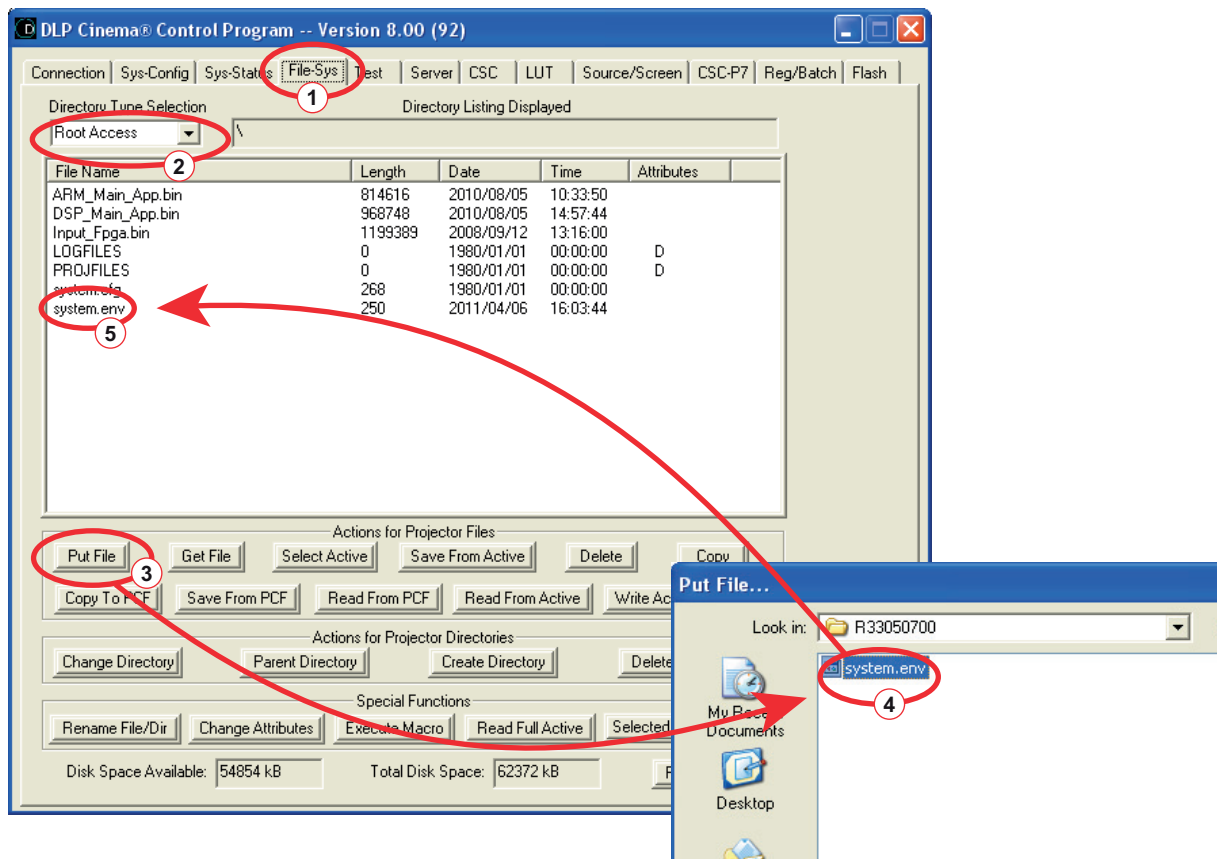


Image 1-1

3. Power Cycle the projector.
4. Login to the TI electronics using the control application again.
5. View the TI System Logs. You should now see entries similar to below.

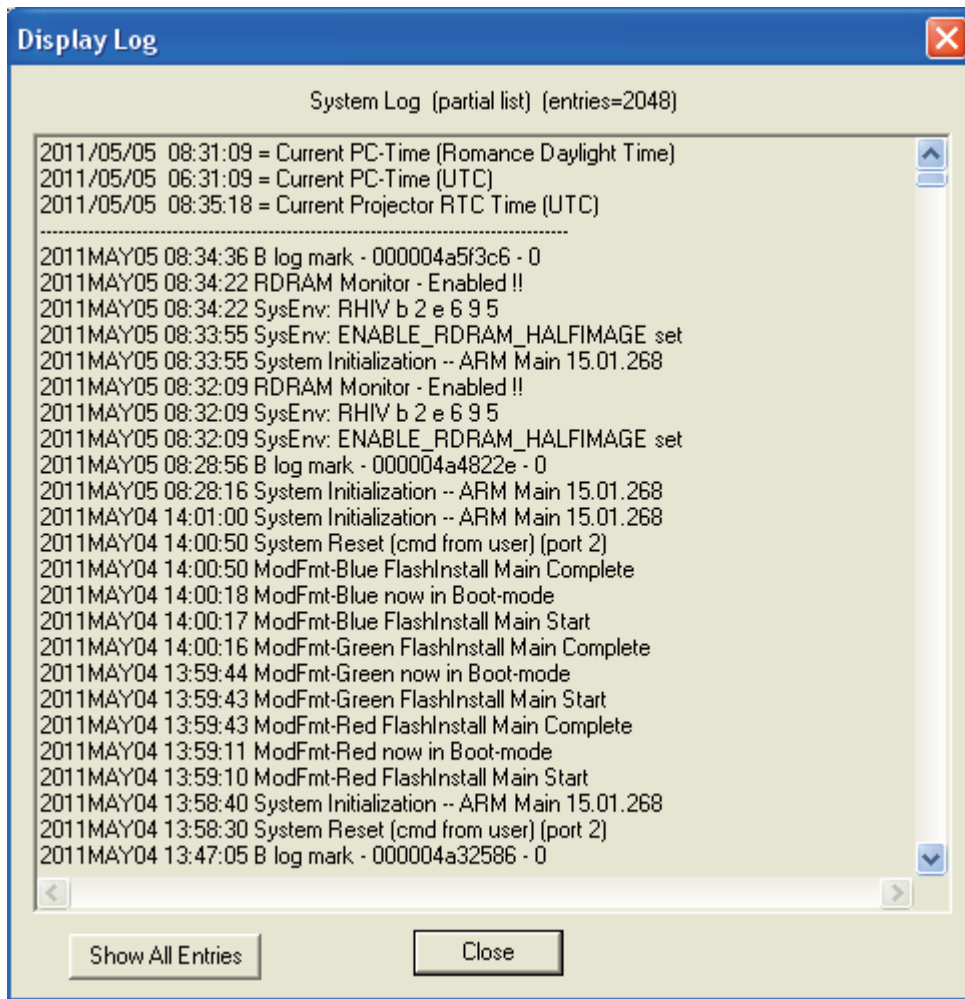


Image 1-2

### 1.3 Approvals

#### Modification approved by:

Escalation Manager    R&D Director                      Product Manager                      Quality Manager

If you should have any more questions, or remarks, please do not hesitate to contact our technical support team via the following web site [www.Barco.com/esupport](http://www.Barco.com/esupport).